



# **Installing the** **Dye Sublimation** **Printing System**

**Instructions for**

**Epson D120 Printer**

**ArTainium UV+ D120 Bulk Ink Feeder**

**ITec Economy Heat Press STX11 / STX20**

# Index

<b>Page</b>	<b>Contents</b>
1	Contact Information
2	Unpacking and Preparing the Printer
3	Unpacking and Preparing the Printer continued
4	Unpacking the bulk ink feeder and installing it
5	Unpacking the bulk ink feeder and installing it cont.
6	Unpacking the bulk ink feeder and installing it cont.
7	Additional Supporting Notes
8	Installing the Printer Driver
9	Installing the ICC Colour Profile
10	Configuring the Printer Driver
11	Configuring the Printer Driver cont
12	Configuring the Printer Driver cont
13	Printing a Nozzle Check
14	Performing a Head Clean
15	Installing the Heat Press
16	Setting the Times & Temperature on the Heat Press Health & Safety Notices

## **Thank You and Welcome**

Firstly, Thank you for purchasing your Dye Sublimation printing system from ISub (Education) Limited and we welcome you to the growing number of schools that have chosen to work with our company.

We are a small, dedicated team of supportive staff, and our aim is to help you introduce or expand the use of Dye Sublimation within your school – simply and easily.

These installation instructions are designed to assist you in unpacking, setting up and getting started with the Dye Sublimation printing equipment and should cover most questions that may arise.

However, if during the installation process you require any further assistance or just have some additional questions, please don't hesitate to contact us.

Our contact details are as follows:-

**ISub (Education) Limited,**  
*36 Spencer Street,*  
*Burton Latimer,*  
*Northamptonshire,*  
*NN15 5SQ.*

Telephone:	0121 288 9898
Fax:	01536 725081
e-mail:	<a href="mailto:enquiries@isub-education.co.uk">enquiries@isub-education.co.uk</a>
Website:	<a href="http://www.isub-education.co.uk">www.isub-education.co.uk</a>

**The Team at ISub (Education) Limited**

## Unpacking and Preparing the Printer



Open the printer box and remove the items in the top of the box.



Retain these parts, but all the other parts are not required



Remove the printer from the box and remove any shipping packaging from the printer.



Insert the power cable in the back of the printer and plug into the power supply.



Insert the USB A to USB B cable here. (not supplied)

**\*\* Do not plug in to the computer yet \*\***

# Unpacking the Bulk Ink Feeder System & Installing.



Unpack the contents of the box and find the installation instructions booklet.

Due to the fact that each printer model has its own model of bulk ink feeder, the installation instructions do vary.

The bulk ink feeder comes with specific installation instructions contained in the installation instructions booklet supplied with your bulk ink feeding unit, we are also supplying some instructions below.



1. Find the bulk ink feeder box



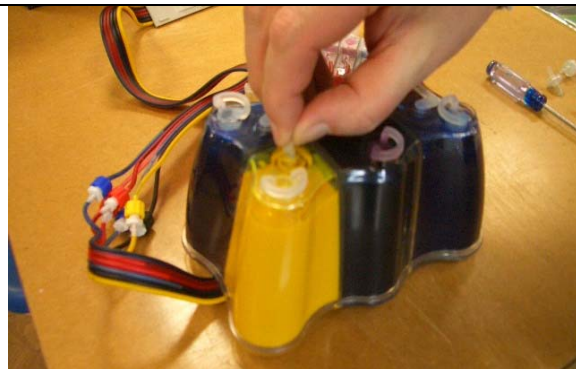
2. Unpack the contents



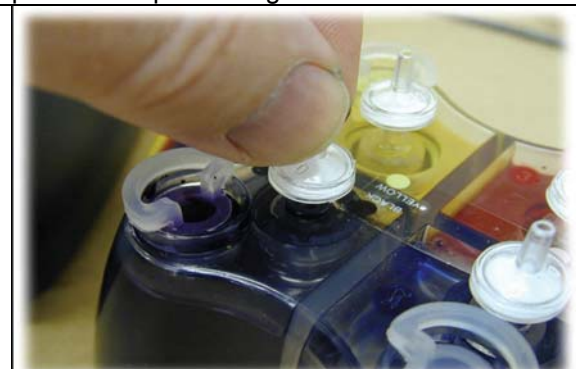
3. Separate into 2 piles



4. Keep the parts shown out and return all the other parts to the plastic bag



5. Remove the 5 small rubber bungs (not the large ones). Use a tissue to remove any ink from the rubber bungs and place them into the small plastic bag in step 4



6. Place the air filters into the 5 holes you have just removed the small rubber bungs from. (ignore the empty chamber)



7. Place the bulk ink feeder on the right of the printer as shown.

Plug the printer in.



8. Turn on the printer and press the 'ink' button. When the printhead has moved to the cartridge removal position, unplug the mains cable from the back of the printer. This allows the print head to be manually moved.



9. Use the supplied screwdriver to remove the hinge clip that attaches the printhead lid. Place screwdriver at the back of hinge and pries forward.



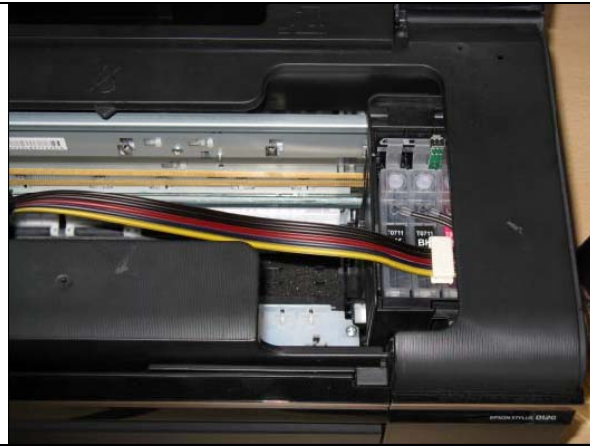
10. Remove the hinge clip.



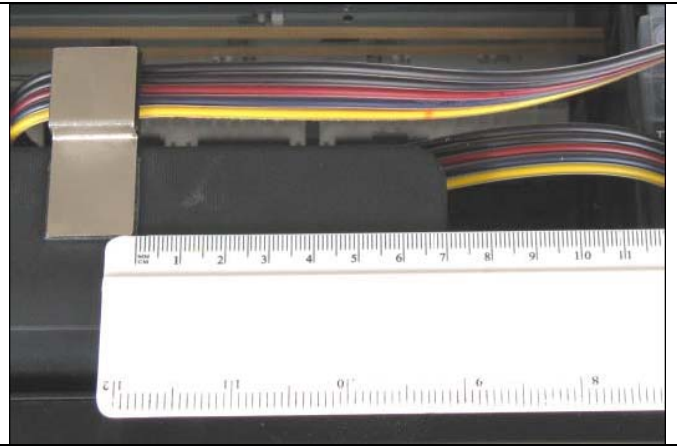
11. Remove the printhead lid once the hinge clip has been removed.



12. Put the cartridges into the printer and firmly push them into place. Listen for the click as the catches snap into place.



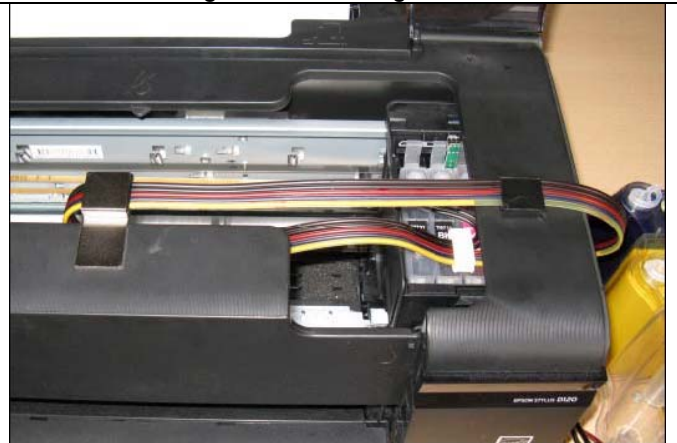
13. Push the print head as far to the right as possible.



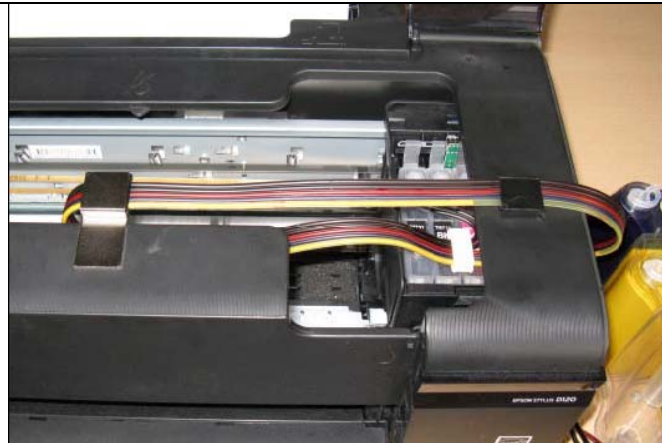
14. Take the metal support bracket and stick it in place using the attached sticky pad. The bracket should be 7cm from the edge of the housing.



15. Slide the printhead all the way to the left and back to the right to ensure that there is enough slack in the tubes.



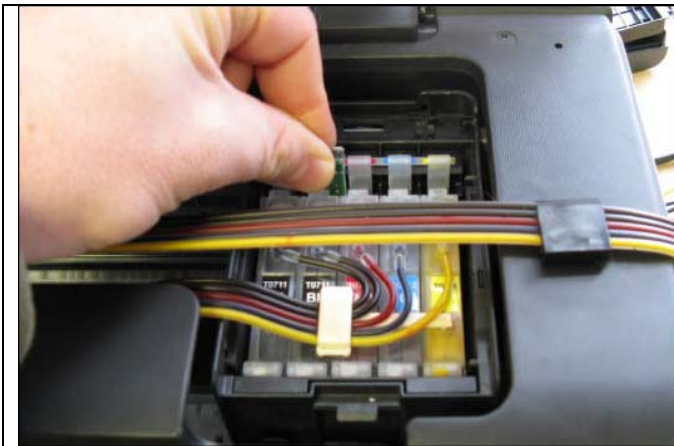
16. Take the second support bracket and stick it in place on the right hand side of the printer housing as shown.



17. Ensure that all slack / excess is pulled through this bracket so that the tubes between the brackets are taught.  
Plug in the mains power cable and turn on your printer.  
The printer will go through the initial head charge before your system is ready for use.



18. If the red ink light is displayed when the printer is turned on. Press the ink button to move the cartridges to the removal position.



19. Ensure that all the cartridges are firmly pushed into place and then hold the chip reset button for 5 seconds.

20. Press the ink button and the printhead will read the chips and begin the initial head charge.

21. Now complete the following steps, in order:  
i) Install the Printer Driver  
ii) Install the ICC Profile - to ensure correct colour on your print outs.  
iii) Configure the printer driver.

## **Additional Supporting Notes** **(In relation to the Bulk Ink Feeder.)**

1. The bulk ink feeder box contains a syringe and hypodermic needle, this is in case the need arises to re-prime the system should it ever be allowed to run dry. Please think carefully about where this is stored.
2. When installing the bulk ink feeder, please ensure that the ink feeding tubes are not twisted.
3. Please retain the left over parts, installation instruction booklet, CD's, syringes, small rubber bungs and spare parts in the bulk ink feeder box for future use.

**\*\* Note: the small bungs are specifically required at a later date when you need to refill the ink chambers \*\***

4. Please note that the ArTainium CD contains specific instruction for printing with the ICC profile from design packages such as Photoshop and CorelDraw.
-

# Installing the Printer Driver on your PC

**\*\* To complete this process, you may require an Administrator's log on for your PC \*\***

**\*\* Please consult your IT department for specific information \*\***



Locate the CD containing the printer driver, the cd was supplied with your printer.

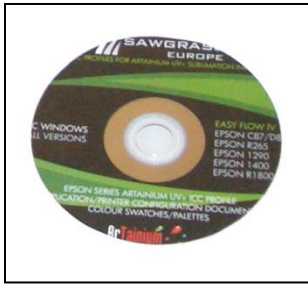
Place in the CD drive of the PC that will run the Dye Sublimation printer.

The CD will auto start and display an installation screen.

1. Click on the Custom Install button.
2. You will now be presented with a list of items you can install.
3. Click on the Printer Driver option only.
4. Once the driver is installed it will ask you to connect the printer.
5. Make sure the printer is turned off and connect the USB cable to the PC.
6. Switch on the printer.
7. The computer should now find the printer and install the driver automatically.
8. Once completed the software will give you a message saying that it has completed successfully.

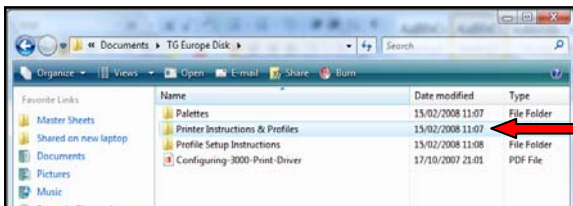
**Important:** You now need to follow the steps to install the ICC profile. The ICC profile ensures correct colour output on your print outs. Instructions for completing this are on the next page.

# Installing the ICC Colour Profile

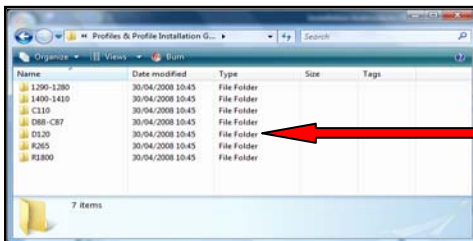


Locate the following CD and place in the CD drive of the PC that will run the Dye Sublimation printer.

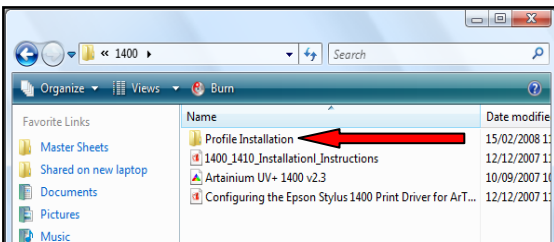
**Note:** You may need someone from IT to give you Administrator rights to be able to install software.



Browse the CD's contents and locate the following folder.

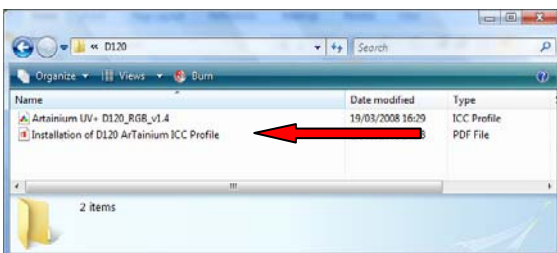


Locate the folder for your specific printer model and double click on the folder.



Locate the folder named 'profile installation' and double click on that folder.

Next double click on the folder relevant to your hardware platform – either Macintosh or Windows.



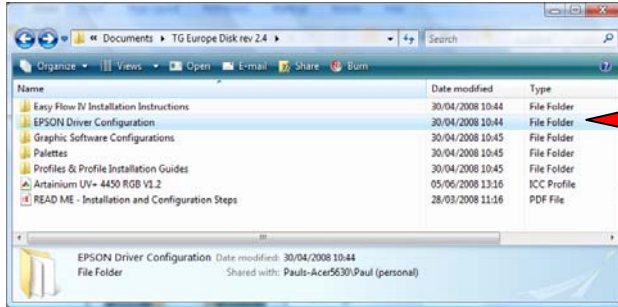
Open the PDF file for your printer and follow the instructions for installing the ICC profile for your printer.

**Important:** You now need to follow the steps to configure the printer driver, to use the specific Dye Sublimation settings. Instructions for completing this are on the next page.

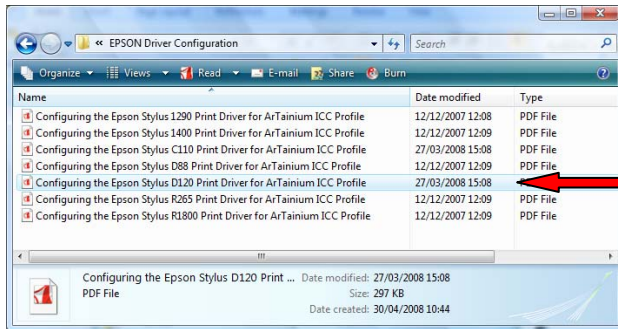
# Configuring the Printer Driver on your PC



1. Browse to the CD



2. Locate and double click on this folder.



3. Open this PDF file and follow the instructions to configure the printer driver.

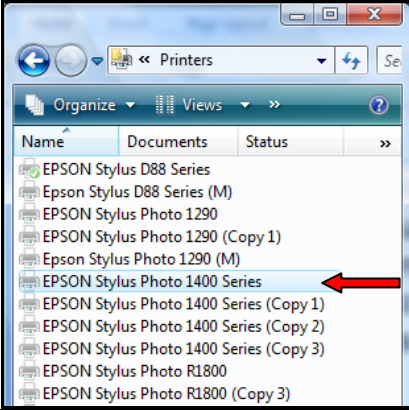
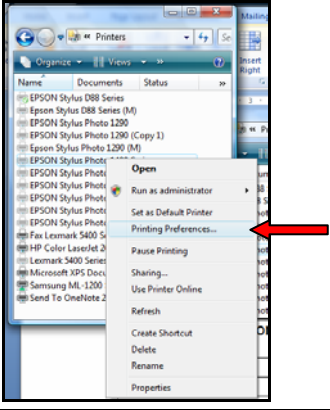
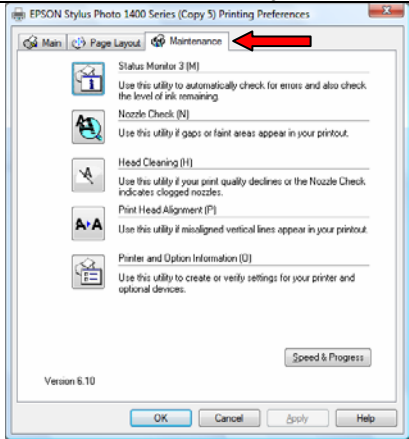
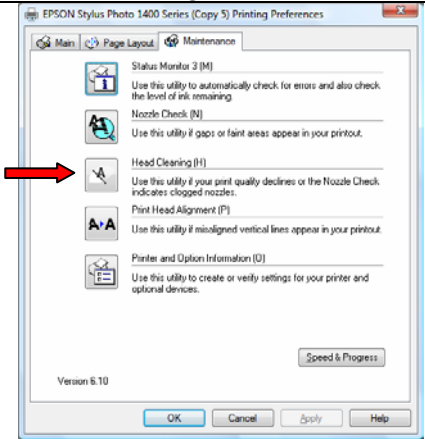
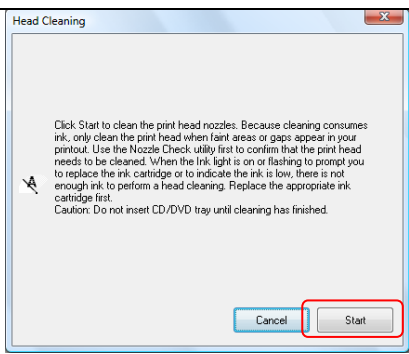
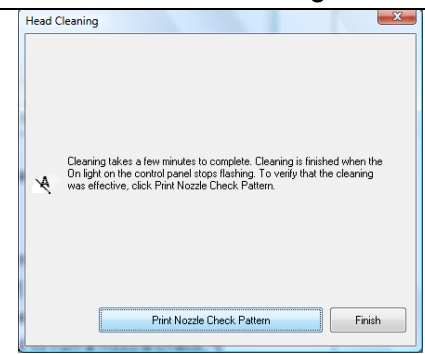
# Performing a Head Clean.

**Note: Instructions may differ based on operating system or printer driver versions installed.**

Occasionally a printer will not print all the colours correctly due to a blocked ink nozzle on the inkjet printing head. There can be a number of reasons for this, including the printer being left for a long time without running any prints or the printer being in a dusty / dirty environment or just simple daily use.

Follow the instructions below to complete a head clean cycle.

1. On the computer attached to the dye sublimation printer - Click on Start
2. Click on Control Panel
3. Click on Printers and Faxes

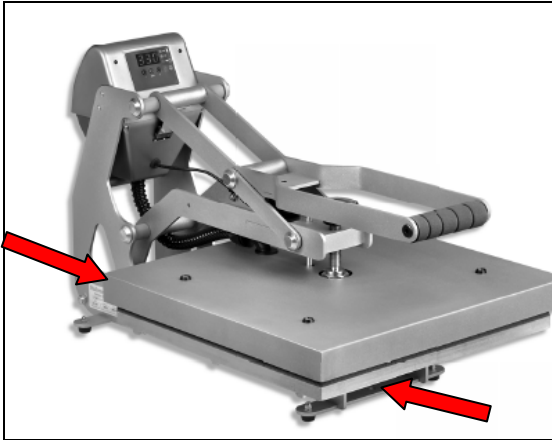
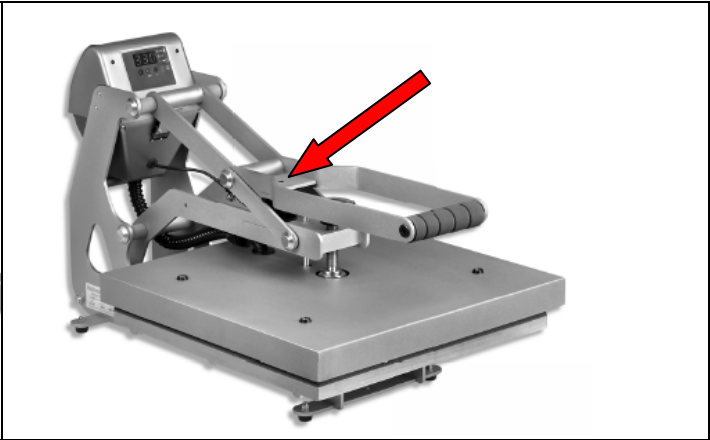
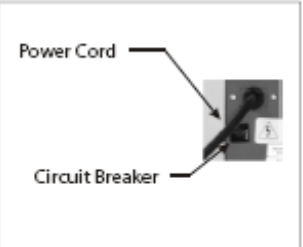
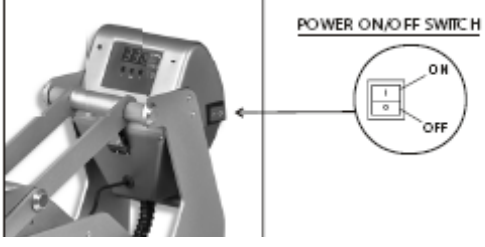
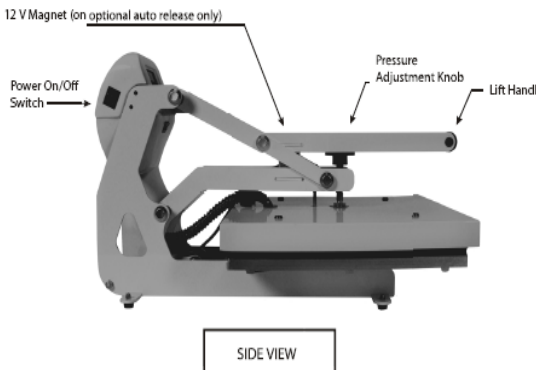
	
<p>4. Right click on the printer you have installed</p>	<p>5. Click on 'Printing Preferences'</p>
	
<p>6. Click on the maintenance tab.</p>	<p>7. Click on the head cleaning button.</p>
	
<p>8. Click on Start.</p>	<p>9. Click on Print Nozzle Check Pattern to see if your problem is resolved</p>

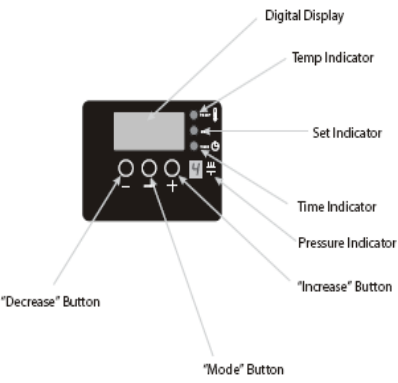
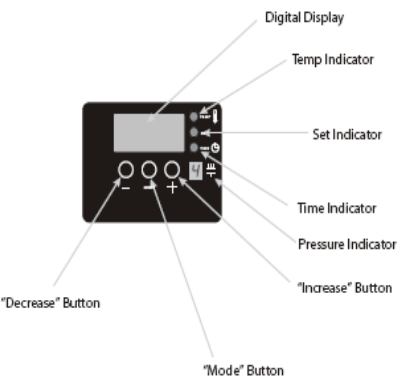
Note: In extreme cases you may need to do 2 or 3 cleans.

# Installing the Heat Press

**\*\* You will need assistance to complete this section. The press requires two people to remove it from the box \*\***

1. Remove the Heat press from the box. It is secured to the wooden base.  
*Note: We strongly recommend retaining this reinforced box in case the press ever needed returned at a later date.*

	
<p>2. Remove the wooden base by removing the two bolts (11mm) Indicated here and at the rear.</p>	<p>3. Unscrew the transit bolt and retain it, in case you should wish to move or return the press at a later date.</p>
 <p>Power Cord</p> <p>Circuit Breaker</p> <p><small>* Featured on the opposite side of the press</small></p>	 <p>POWER ON/OFF SWITCH</p>
<p>4. Insert the UK power cord.</p>	<p>5. Open the press and turn it on using the power On/Off Switch.</p>
 <p>12 V Magnet (on optional auto release only)</p> <p>Power On/Off Switch</p> <p>Pressure Adjustment Knob</p> <p>Lift Hand</p> <p style="text-align: center;">SIDE VIEW</p>	<h3 style="text-align: center;"><u>Basic Press Operation</u></h3> <ol style="list-style-type: none"> <li>i) The press is opened and closed by lowering or raising the lift handle.</li> <li>ii) The pressure is adjusted by turning the pressure adjustment knob clockwise for more pressure and anticlockwise for less pressure.</li> </ol>

 <p><b>Note:</b> When you turn the press on it displays 93° C until such time as the heat press temperature exceeds this temperature as it warms up to the temperature you have set.</p>	<h3 style="text-align: center;"><u>Setting the Temperature</u></h3> <p>Locate the LED Display.</p> <p>Press the mode select button located in the center of the control panel. The SET) and (TEMP) lights located next to the display will illuminate indicating you are in the adjust temperature mode.</p> <p>Next, press the (-) button located to the left of the mode select button to lower the temperature setting, or press the (+) button located to the right of the mode select button to raise the temperature setting.</p> <p>The temperature can be set from 205 F (96 C) to 430 F (221 C).</p>
 <p><b>IMPORTANT:</b> The press will not function when the (SET) Light is illuminated. This light indicates that you are in the Adjust Temperature or Time Mode not the Print Mode.</p>	<h3 style="text-align: center;"><u>Setting the Time</u></h3> <p>Once you have completed adjusting the temperature press the mode select button again. This will advance you to the Adjust Time Mode. The (SET) and (TIME) lights will illuminate, indicating you are in the adjust time mode.</p> <p>Adjust the time by pressing the (-) button located to the left of the mode select button to reduce the time setting, or press the (+) button located to the right of the mode select button to increase the time setting. The time can be set from 001 to 999 seconds.</p> <p>To exit the Adjust Temperature and Time Modes press the Mode Select Button a third time. All lights will be off and the press will return to the Print Mode.</p>

<b>IMPORTANT HEALTH &amp; SAFETY NOTICES</b>	
<ul style="list-style-type: none"> <li>▶ The press should be placed on a sturdy suitable stand at least 36”L x 24”W x 29”H.</li> <li>▶ Power supply cord must be disconnected before cleaning or servicing press.</li> <li>▶ The heat press operates at high temperatures. Pay particular attention to the risk of burns which can be sustained by touching the heated platen during use.</li> <li>▶ Keep hands clear from the platens of the press during platen lock down as the pressure can cause injury.</li> <li>▶ It is recommended that students should not operate the heat press unattended.</li> <li>▶ When the press is turned off it takes approx 30 minutes to cool down. It is recommended that a ‘<b>Caution Hot</b>’ sign is displayed on the press or that a guard is placed around the press.</li> </ul>	